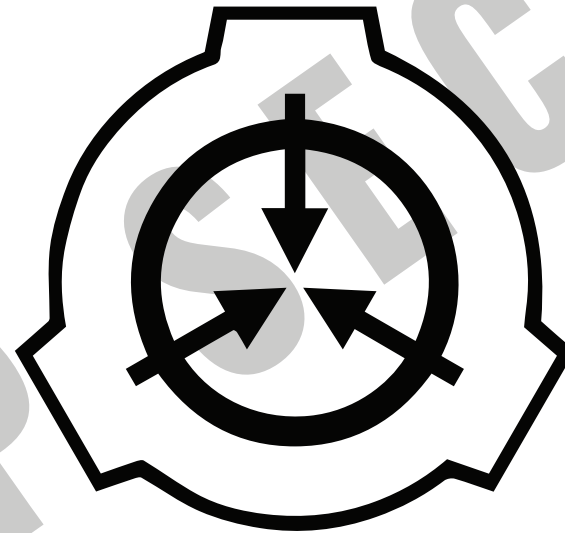


SCP FOUNDATION

Secure. Contain. Protect.



SITE 19

Haunt Comp 2023
Visual Development
Group 8

FOR USE BY FOUNDATION MEMBERS ONLY

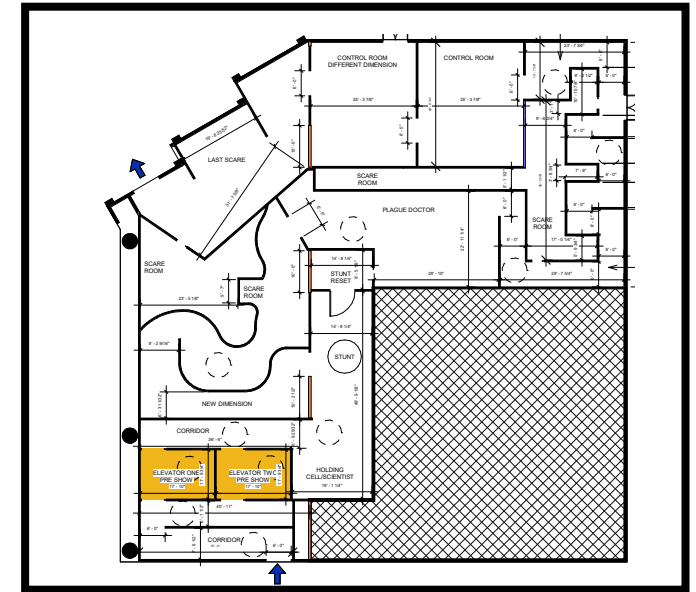


Maze Exterior

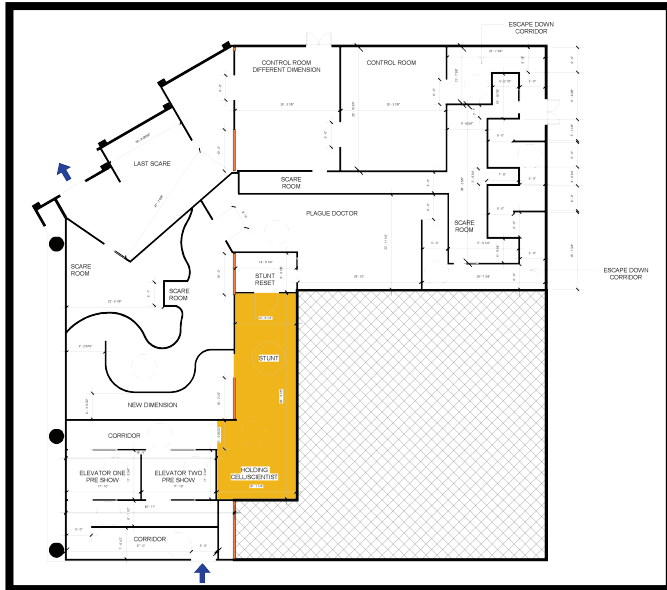




Elevator Scene



You take the elevator down into the bowels of SCP's Site 19, arriving at work for the day and meeting your boss, Dr. Ripley.



Holding Cells + Stunt

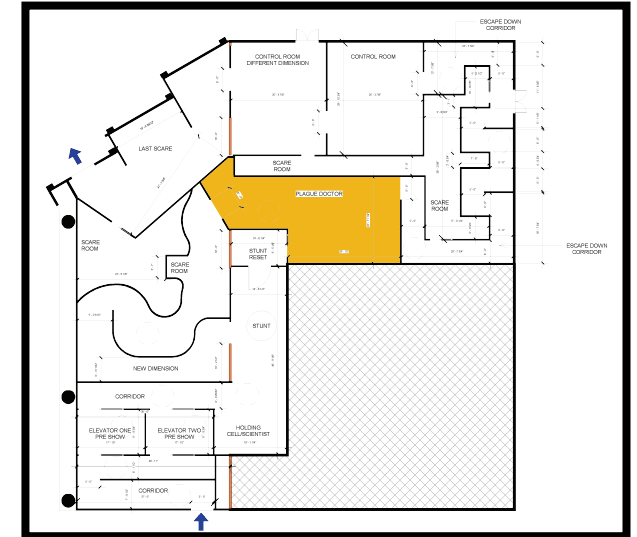
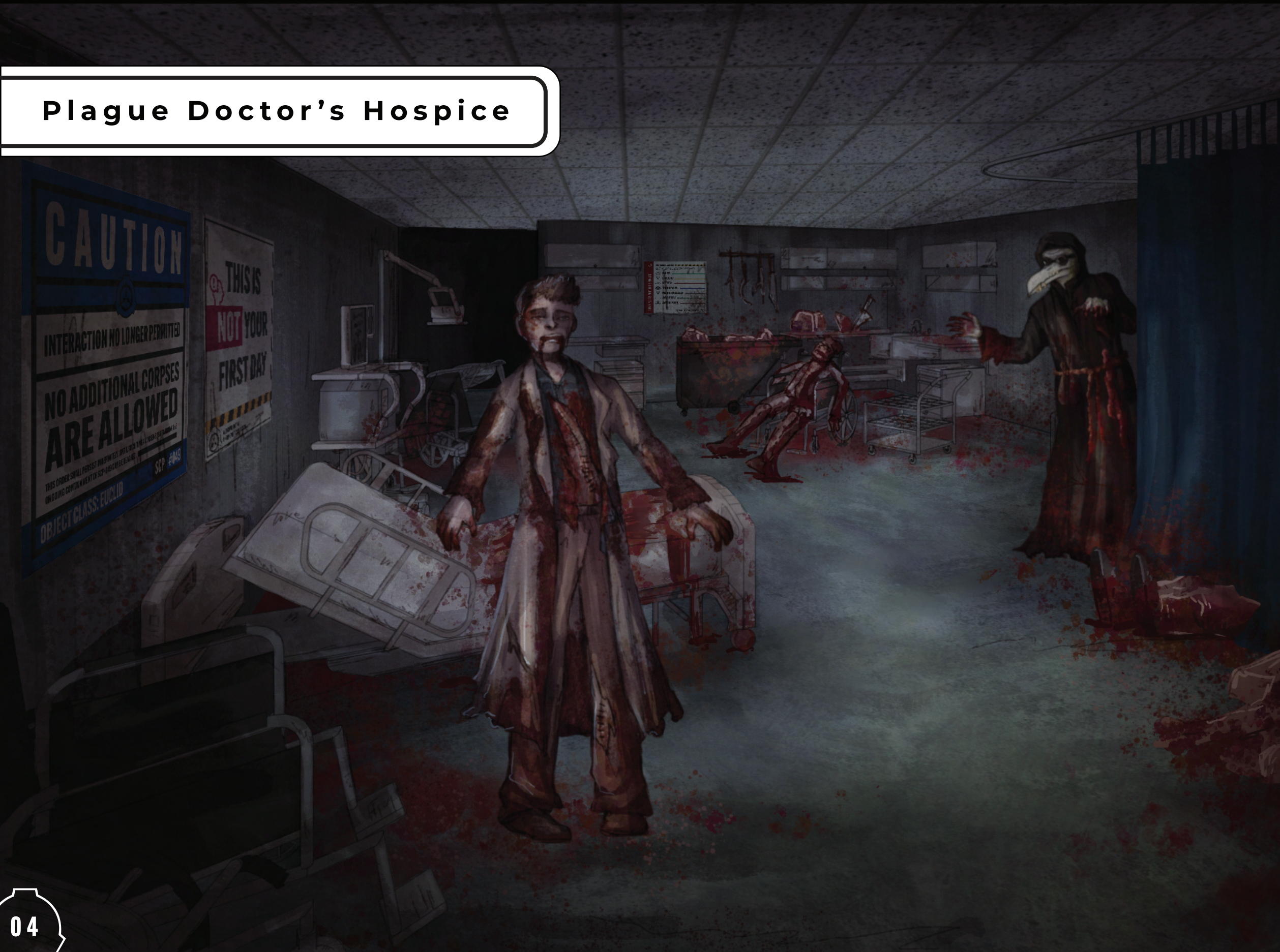


Your escape route lies through the bowels of SCP Site 19. You must dodge SCP-096, a skeletal humanoid with a huge unhinged jaw that is known to attack anyone who sees its unnatural face.

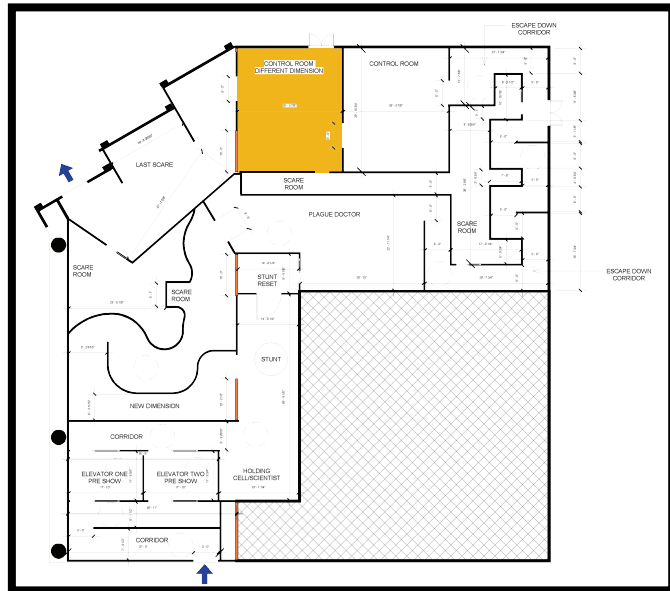




Plague Doctor's Hospice



Upon exiting the new dimension, you come out into Site 19's medical facility, which has been taken over by the **Plague Doctor**. Many of his deformed and disfigured patients are dead, but a few are still moving. Careful—the remaining patients with a pulse are no longer acting very...human.



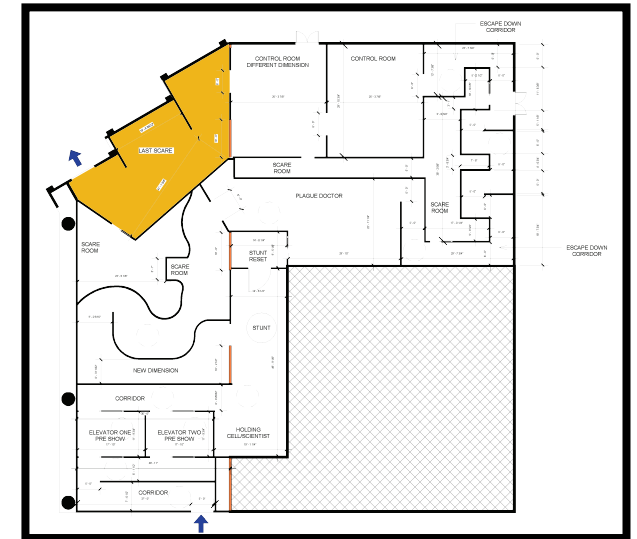
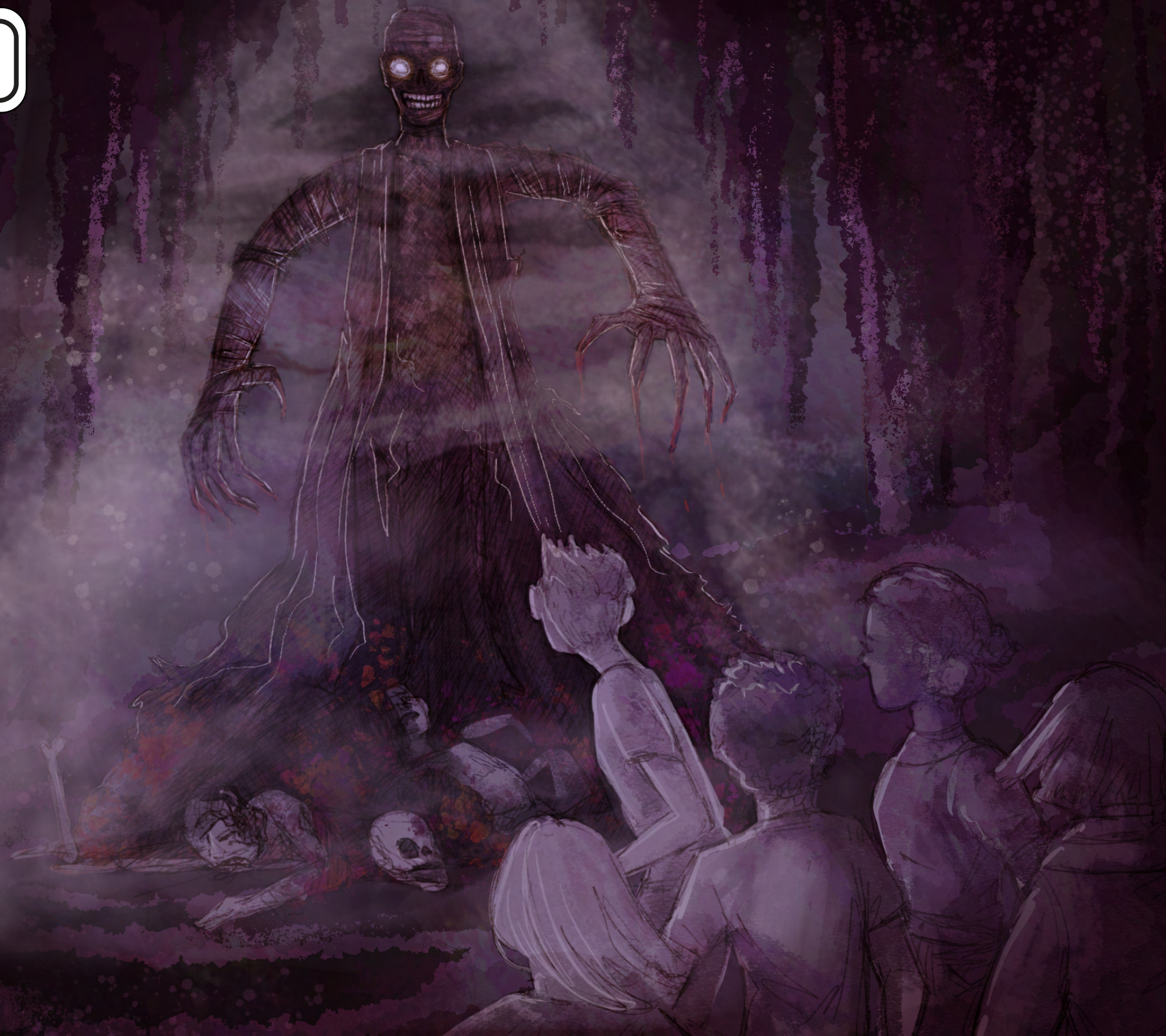
The control room is turned upside-down in the new dimension. On the few monitors that are still functioning, you can see the Theme Park outside Site 19, infested with SCP creatures. It is their world now.

Corrupted Control Room





Final Scare



CAUTION



NO PHYSICAL INTERACTION ALLOWED

**REPORT CORROSIVE EVENTS
TO SITE SECURITY**

ANY OBJECTS OR PERSONNEL LOST TO SCP-106 ARE TO BE DEEMED MISSING/KIA.

OBJECT CLASS: KETER

SCP #106

You exit the dimension onto a path to the exit. SCP-106 is there once again, rising above the ground and reaching for you as you make your escape.



SCP - 106 Visual Inspiration

Image from SCP wiki ("SCP-106" by Dr Gears, from the SCP Wiki. Source: <https://scp-wiki.wiki-dot.com/scp-106>. Licensed under CC-BY-SA.)



KETER

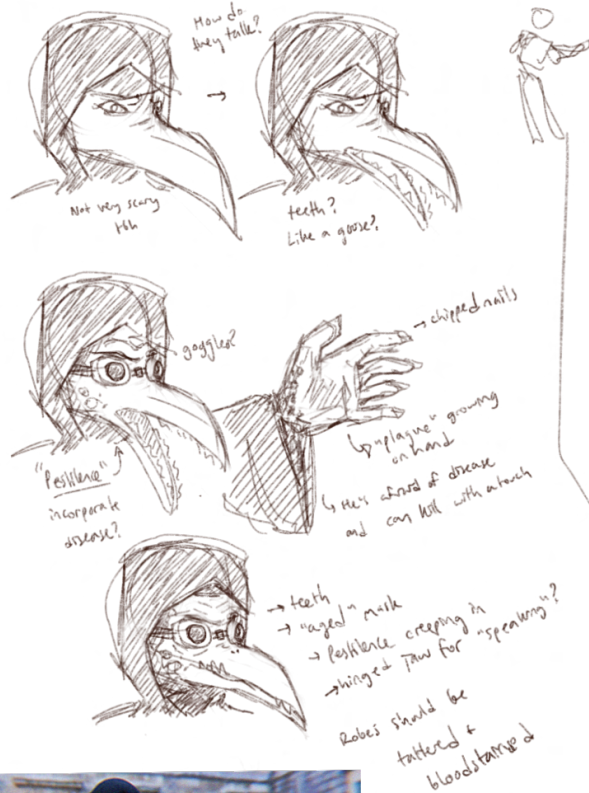


SCP-106

The Big Bad



THE PLAGUE DOCTOR - SCP-049 + VICTIMS



↑ from SCP website. The "beak" is part of its head ...?



EUCLID



SCP-049

Plague Doctor



VICTIMS - other scientists/employees of Site 19

↳ -049 (Plague Doctor) operates on people

↳ -106 (Big Bad) corrupts them

makeup:

- ashen face
- blood stains

jerky motions

operation scars
(or corruption if victim of -106)



oh no,
Dad got
taken/operated on!

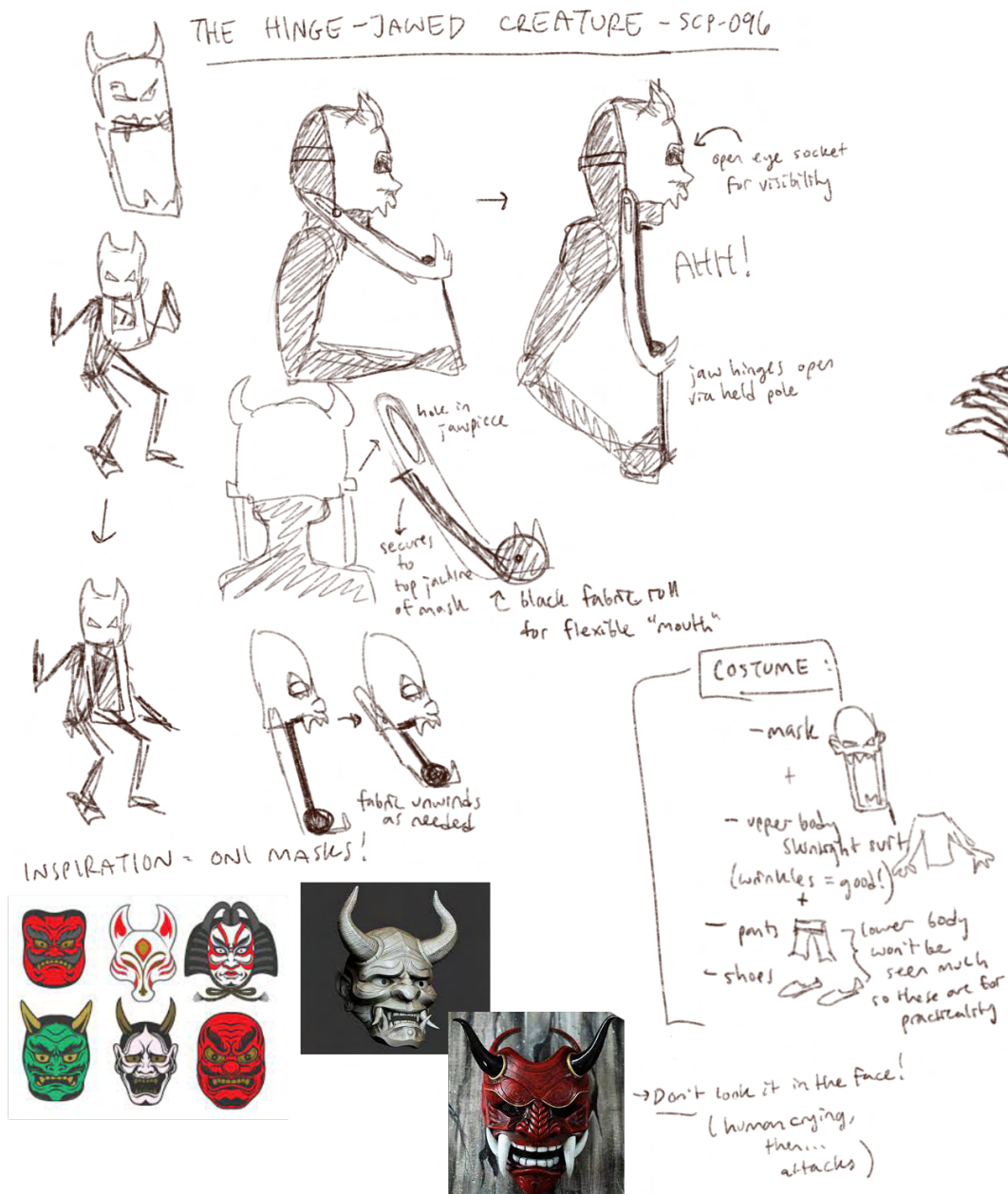


EUCLID



SCP-049-2

Plague Doctor Victim



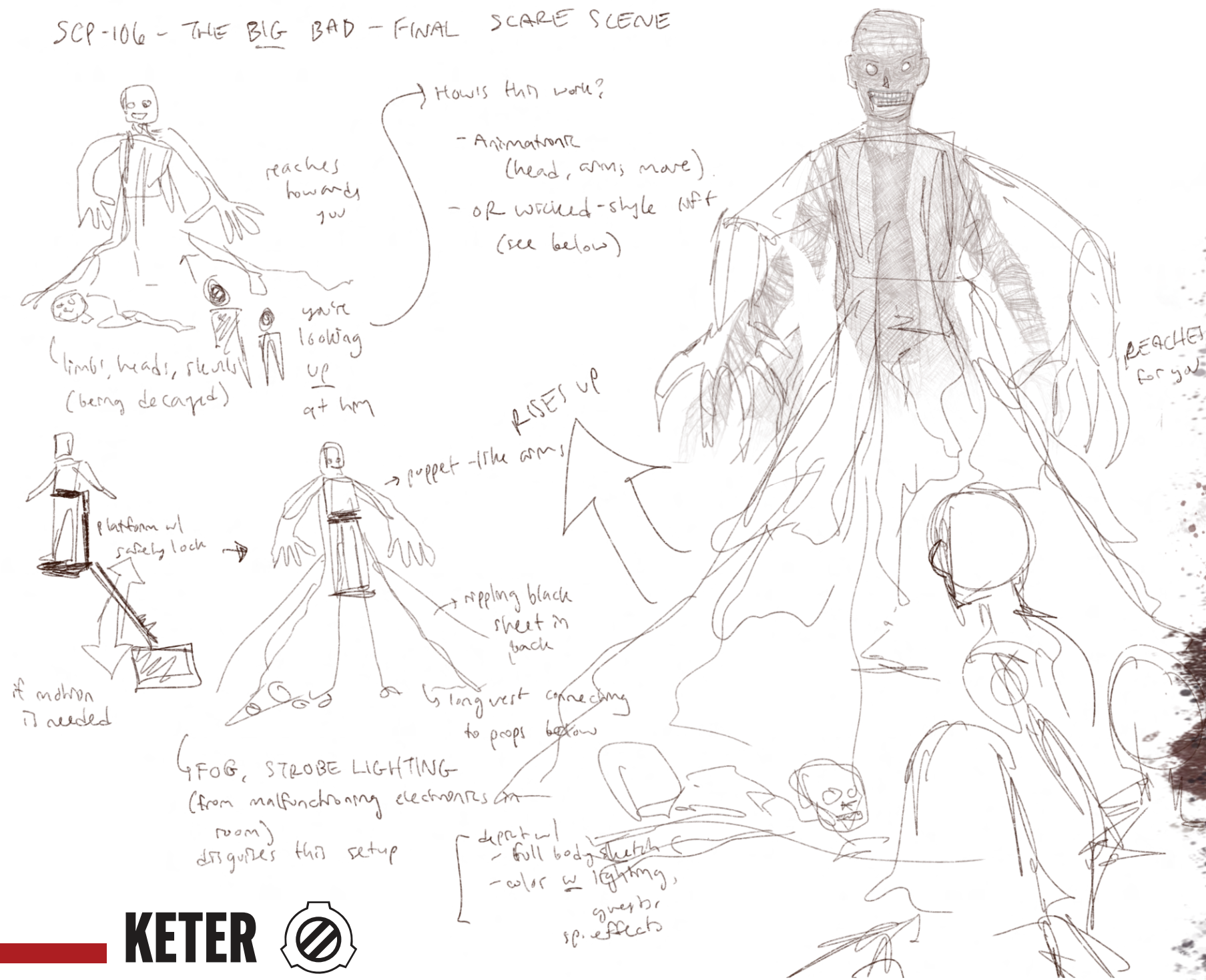
EUCLID

SCP-096

The Shy Guy



SCP-106 - THE BIG BAD - FINAL SCARE SCENE



KETER



SCP-106

The BIG Bad - Finale



Logo/Marquee





Signage - Interior and Exterior



THIS IS **NOT** YOUR FIRST DAY



WELCOME TO THE
ANTIMEMETICS DIVISION.

THE WORLD WILL **NOT END** ON APRIL 29th, 2023



SCP-3519 is a memetic contagion carried by multiple vectors in print, visual, and auditory media. It consists of the strong conviction that the world will end on April 29th, 2023 and that suicide prior to the event is desirable.


**REPORT ANY INCIDENTS TO THE
COGNITOHAZARD DIVISION**



WELCOME TO THE
ANTIMEMETICS DIVISION.

COGNITOHAZARD WARNING


Documents contained in this room are carriers for anomalous cognitohazardous influences. **You do not recognize the bodies in the water.**



It is imperative that all personnel accessing this room be certified as having a **Cognitive Resistance Value (CRV)** of no less than 14.5.

Should you fail an automated CRV verification, please remain calm and do not move.
A member of your site's medical staff will be with you shortly.

YOU DO NOT RECOGNIZE THE BODIES IN THE WATER



WELCOME TO THE
ANTIMEMETICS DIVISION.



Signage - Interior, Anomaly Classification System (ACS)

LOCKED BOX TEST

SAFE

If you lock it in a box, leave it alone, and **nothing bad** will happen.

EUCLID

If you lock it in a box, leave it alone, and **you're not entirely sure** what will happen.

KETER

If you lock it in a box, leave it alone, and **it easily escapes**

THAUMIEL

It **IS** the box.

ARCHON

If you **could** have locked it in a box, **but chose not to.**

APOLLYON

If you **can't** fit it in a box and **it's about to end the world**

ANOMALY CLASSIFICATION SYSTEM (ACS)

PRIMARY CLASSES

Remembering the Anomaly Classification System (ACS), might be the difference between life and death.
Object classes are as follow:

SAFE

Deal with it responsibly, everything should be fine.

EUCLID

Extreme Caution, keep your distance.

KETER

Complex containment procedures. **REALLY** keep your distance.

THAUMIEL

A helping hand.

NEUTRALIZED

Just how we like it.

ARCHON

Better left alone.

APOLLYON

END OF THE WORLD

SECURE. CONTAIN. PROTECT.



Signage - Caution/Warning Signs





Merch - Popcorn Buckets

